

<u>Tract</u>	<u>DOT Date</u>	<u>DOT Filed</u>	<u>Record Owner</u>	<u>Borrower</u>	<u>Lender</u>	<u>Amount</u>
1A	10/17/2003	12/15/2003	Old Agency Business Park, Inc.	Old Agency Business Park, Inc.	Community Bank of Mississippi	\$464,057.50
1A	11/28/2007	11/30/2007	Old Agency Business Park, Inc.	Parkway Crossing, LLC	BancorpSouth Bank	\$860,080.00
1B	11/13/2008	11/25/2008	Old Agency Business Park, Inc.	Old Agency Business Park, Inc.	Madison County Bank	\$227,899.10
1B	01/09/2008	01/10/2008	Old Agency Business Park, Inc.	CE Development, Inc.	First Bank	\$700,000.00
1B	10/16/2003	12/15/2003	Old Agency Business Park, Inc.	Old Agency Business Park, Inc.	Madison County Bank	\$400,146.50
1C	10/17/2003	12/15/2003	Old Agency Business Park, Inc.	Old Agency Business Park, Inc.	State Bank & Trust Co.	\$528,025.50
1C	01/29/2008	01/29/2008	Old Agency Business Park, Inc.	Westwoods Investments, LLC	Bank of Yazoo City	\$800,188.00
1D	02/15/2008	02/15/2008	Old Agency Business Park, Inc.	Westwoods Investments,	Bank of the South	\$700,680.00
1D	09/27/2006	10/27/2006	Old Agency Business Park, Inc.	Old Agency Business Park, Inc.	Citizens National Bank of Meridian	\$585,530.00
1E	11/14/2003	12/15/2003	Old Agency Business Park, Inc.	Old Agency Business Park, Inc.	Citizens National Bank of Meridian	\$500,170.50
1F	02/11/2009	02/12/2009	Old Agency Business Park, Inc.	Nottaway Pointe, LLC	Holmes County Bank & Trust Co.	\$800,292.00
1F	11/14/2003	12/15/2003	Old Agency Business Park, Inc.	Old Agency Business Park, Inc.	BankFirst Financial Services	\$480,420.50

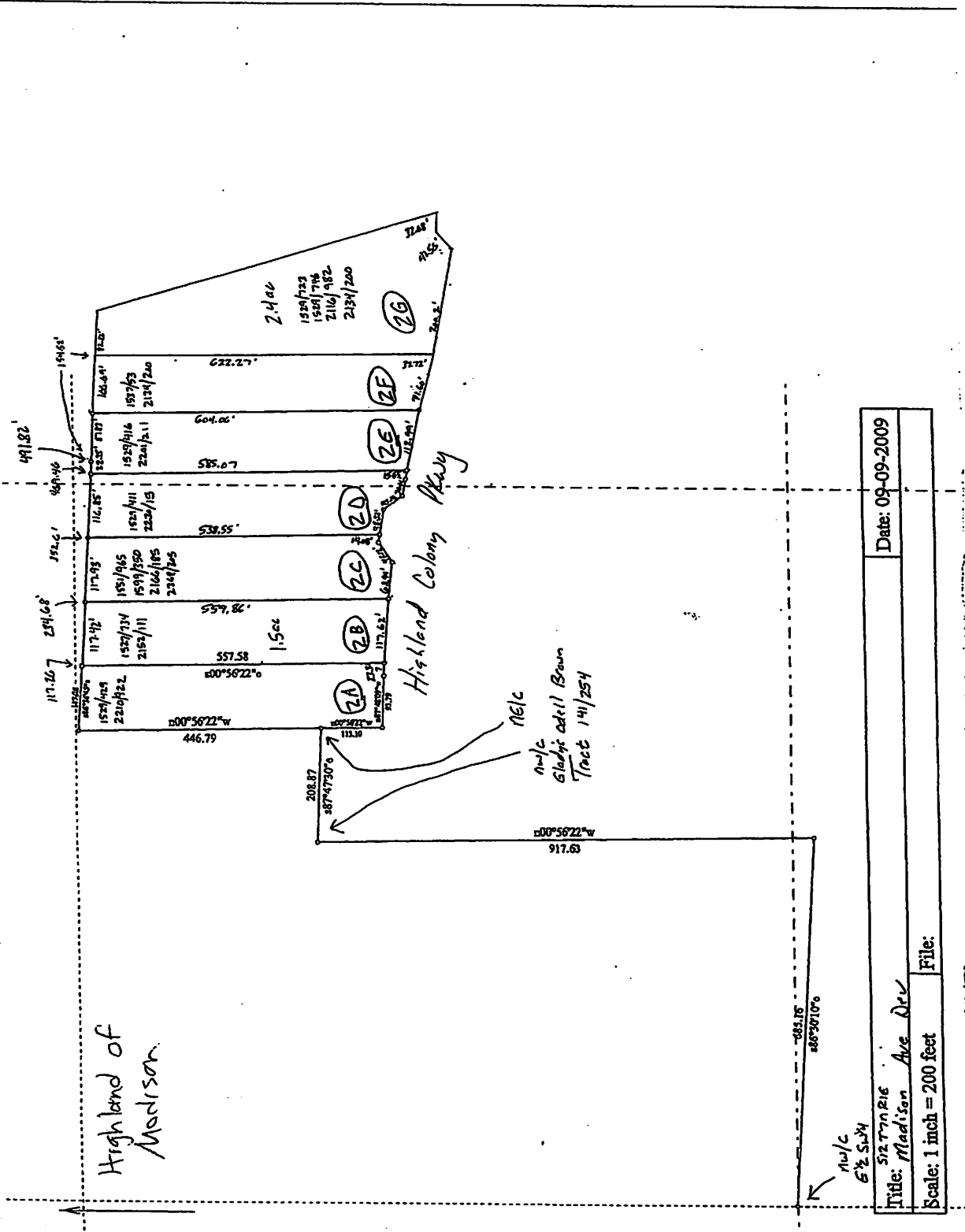




<u>Tract</u>	<u>DOT Date</u>	<u>DOT Filed</u>	<u>Record Owner</u>	<u>Borrower</u>	<u>Lender</u>	<u>Amount</u>
2A	04/11/2003	04/16/2003	Highland of Madison Development, Inc.	Highland of Madison Development, Inc.	Community Bank of Mississippi	\$350,000.00
2A	06/29/2007	07/03/2007	Highland of Madison Development, Inc.	Madison Avenue Development Co., LLC	Renasant Bank	\$600,200.00
2B	02/02/2007	02/06/2007	C&L, Inc.	Madison Avenue Development Co., LLC	OmniBank	\$775,804.50
2B	04/11/2003	04/14/2003	C&L, Inc.	C&L, Inc.	Merchants & Planters Bank	\$266,000.00
2C	03/14/2007	03/14/2007	Highland Development Group, Inc.	Madison Avenue Development Co., LLC	OmniBank	\$740,769.50
2C	10/20/2008	11/12/2008	Highland Development Group, Inc.	CE Development, Inc.	First Bank	\$227,407.26
2C	06/05/2003	06/09/2003	Highland Development Group, Inc.	Highland Development Group, Inc.	Copiah Bank	\$301,519.50
2D	04/11/2003	04/16/2003	CE Development, Inc.	CE Development, Inc.	First Bank of McComb	\$227,348.27
2D	08/01/2007	08/22/2007	CE Development, Inc.	463 Development Company, LLC	Community Bank of MS	\$520,129.50
2E	05/23/2007	06/11/2007	JCE Highland Corp.	Madison Avenue Development Co., LLC	Cadence Bank	\$96,529.50
2E	04/10/2003	04/16/2003	JCE Highland Corp.	JCE Highland Corp.	Citizens National Bank	\$221,667.46
2F	05/02/2003	05/05/2003	Highland of Madison Development, Inc.	Highland CE Corp.	First Commercial Bank	\$304,000.00

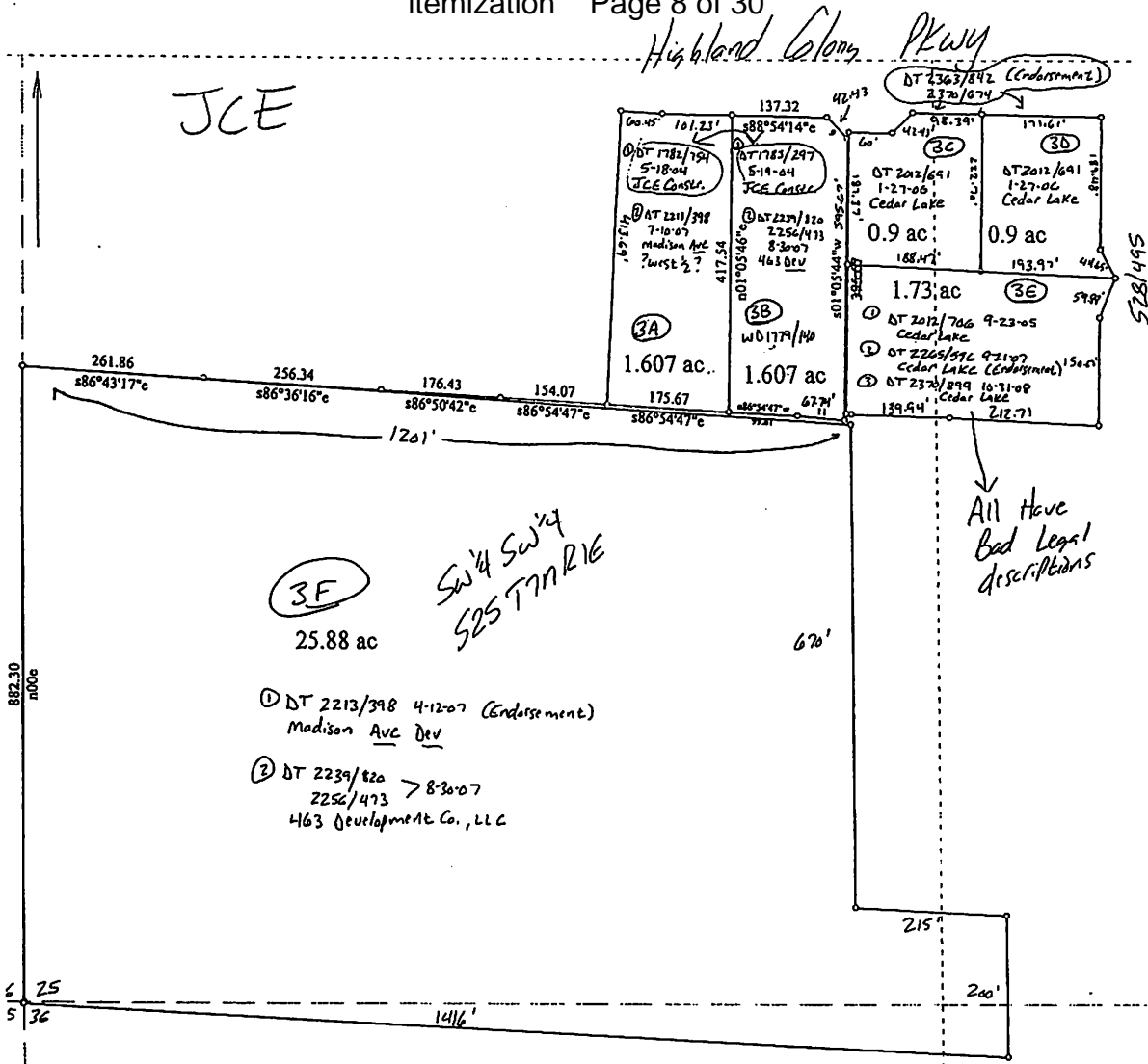
Case	Doc	Filed	Entered	Desc	Amount
09-03763-NPO	153-1	12/17/09	12/17/09 17:54:52	Itemization Page 5 of 30	
2F & 2G	12/08/2006	12/19/2006	Highland of Madison Development, Inc.	Madison Avenue Development Co., LLC	\$1,614,402.04
2G	04/10/2003	04/16/2003	Highland of Madison Development, Inc.	Highland of Madison Development, Inc.	\$498,846.50
2G	10/27/2006	10/31/2006	Highland of Madison Development, Inc.	Madison Avenue Development Co., LLC	\$1,00,279.50

Case	Doc	Filed	Entered	Desc	Amount
09-03763-NPO	153-1	12/17/09	12/17/09 17:54:52	Itemization Page 5 of 30	
2F & 2G	12/08/2006	12/19/2006	Highland of Madison Development, Inc.	Madison Avenue Development Co., LLC	\$1,614,402.04
2G	04/10/2003	04/16/2003	Highland of Madison Development, Inc.	Highland of Madison Development, Inc.	\$498,846.50
2G	10/27/2006	10/31/2006	Highland of Madison Development, Inc.	Madison Avenue Development Co., LLC	\$1,00,279.50



Date: 09-09-2009
Title: Madison Ave Dev
Scale: 1 inch = 200 feet
File:

<u>Tract</u>	<u>DOT Date</u>	<u>DOT Filed</u>	<u>Record Owner</u>	<u>Borrower</u>	<u>Lender</u>	<u>Amount</u>
3A	05/19/2004	05/19/2004	JCE Construction, LLC	JCE Construction, LCC	OmniBank	\$324,342.50
3A & 3F	04/12/2007	07/10/2007	JCE Construction, LLC & Madison Avenue Development Co, LLC	Madison Avenue Development Co, LLC	Merchants & Farmers Bank	\$1,360,529.00
3B	05/18/2004	05/18/2004	JCE Construction, LLC	JCE Construction, LLC	PriorityOne Bank	\$324,438.50
3B & 3F	08/30/2007	09/19/2007	JCE Construction, LLC & Madison Avenue Development Co, LLC	463 Development Co, LLC	State Bank & Trust Co.	\$1,302,914.50
3C & 3D	09/21/2005	01/27/2006	Cedar Lake Investors, LLC	Cedar Lake Investors, LLC	Merchants & Farmers Bank	\$324,274.24
3E	10/31/2008	11/21/2008	Cedar Lake Investors, LLC	Cedar Lake Investors, LLC	State Bank & Trust Co.	\$311,255.53
3E	09/23/2005	01/27/2006	Cedar Lake Investors, LLC	Cedar Lake Investors, LLC	State Bank & Trust Co.	\$353,079.00

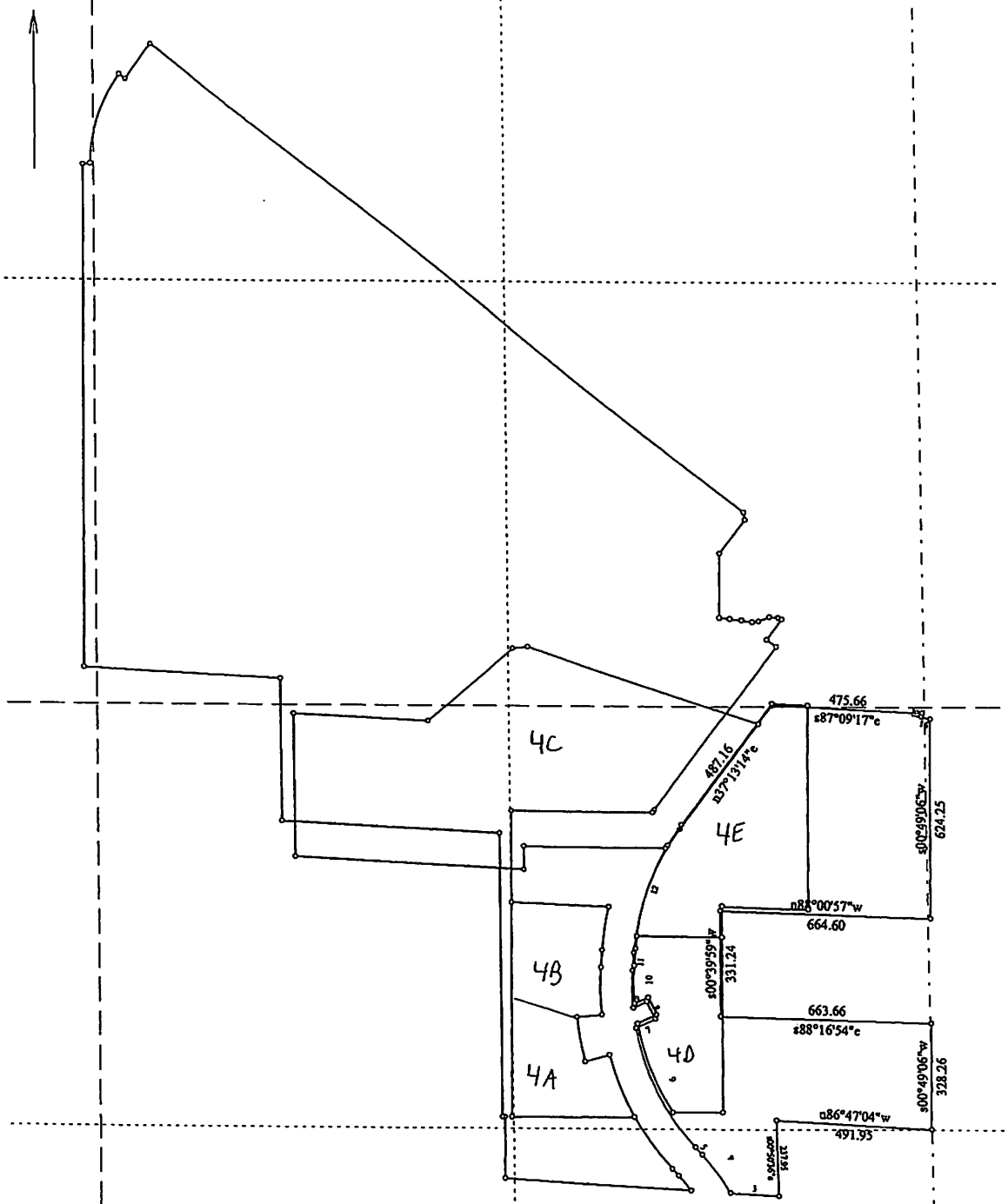


Title:	Date: 09-12-2009
Scale: 1 inch = 200 feet	File: JCE Construction.des

\* 0.9 ac Tracts ? Corporate Centre, LLC 463/529 5-10-00  
 \* 1.73 ac Tract " " " " " "

<u>Tract</u>	<u>DOT Date</u>	<u>DOT Filed</u>	<u>Record Owner</u>	<u>Borrower</u>	<u>Lender</u>	<u>Amount</u>
4A & 4B	07/21/2008	09/17/2008	Hanover Investments, LLC	White Oaks Investment Company, LLC	Bank of Forest	\$1,296,500.00
4C & 4E	07/18/2008	01/06/2009	Town Park of Madison, LLC	Town Park of Madison, LLC	Merchants & Farmers Bank	\$3,037,264.04
4D	04/27/2009	05/06/2009	Landsdowne Group, LLC	Landsdowne Group, LLC	BankFirst Financial Services	\$828,750.00
4D	07/21/2008	10/28/2008	Landsdowne Group, LLC	Twinbrook Run Development Co, LLC	Heritage Banking Group	\$781,980.00
4E	?	?	?	?	Bank of Forest	?

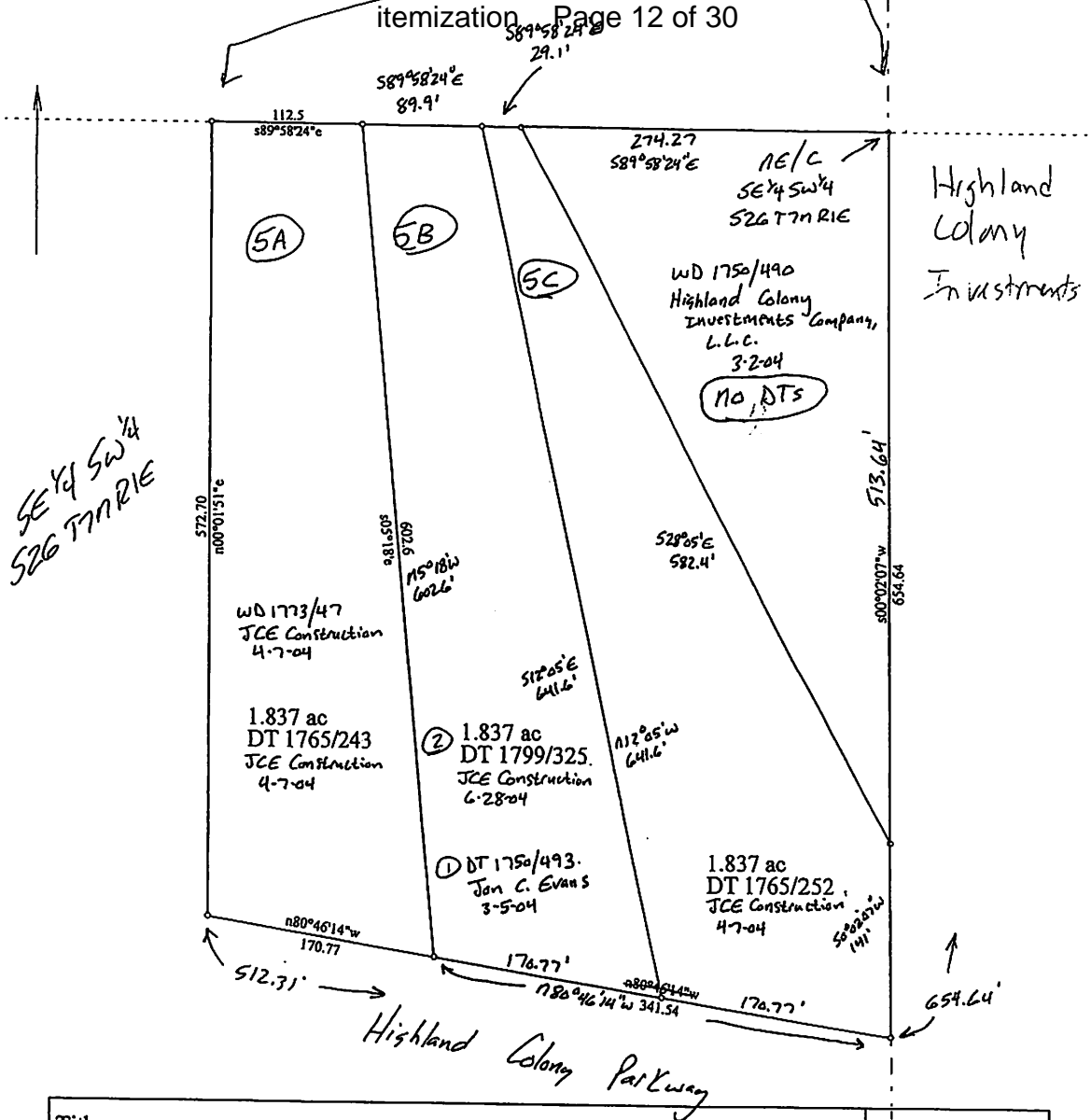
Hanover



Title:	Date: 09-09-2009
Scale: 1 inch = 400 feet	File: Hanover Investments 3.des

<u>Tract</u>	<u>DOT Date</u>	<u>DOT Filed</u>	<u>Record Owner</u>	<u>Borrower</u>	<u>Lender</u>	<u>Amount</u>
5A	04/07/2004	04/07/2004	JCE Construction Co.	JCE Construction Co. Company, LLC	Copiah Bank	\$305,507.50
5B	02/27/2004	03/05/2004	Jon C. Evans	Jon C. Evans	The Carthage Bank	\$328,950.00
5B	05/17/2004	06/28/2004	JCE Construction, LLC	JCE Construction, LLC	The Carthage Bank	\$329,625.00
5C	04/07/2004	04/07/2004	JCE Construction, LLC	JCE Construction, LLC	Bank of Yazoo City	\$305,650.00

5D

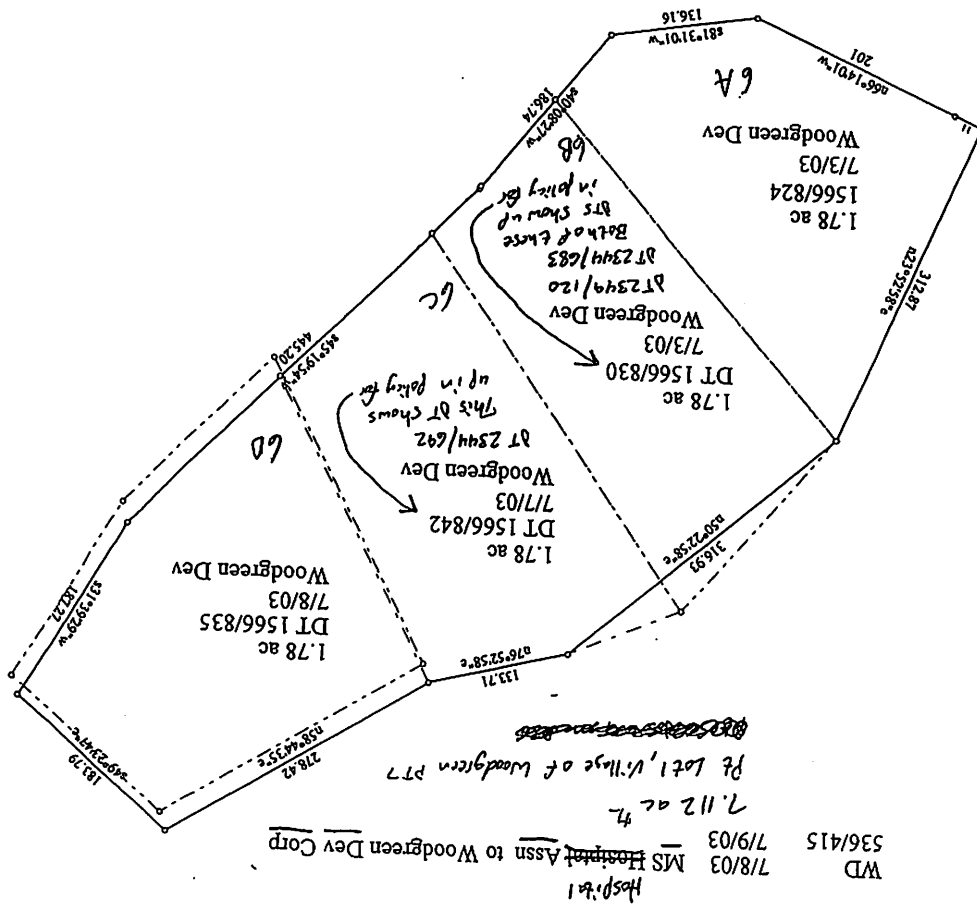


Title:		Date: 09-13-2009
Scale: 1 inch = 100 feet	File: S26 T7N R1E.des	
Tract 1: 3.277 Acres: 142737 Sq Feet: Closure = n00.0001e 513.71 Feet: Precision = 1/4: Perimeter = 2079 Feet Tract 2: 5.533 Acres: 241005 Sq Feet: Closure = n29.2219e 688.33 Feet: Precision = 1/4: Perimeter = 2455 Feet Tract 3: 1.791 Acres: 78006 Sq Feet: Closure = n43.5919e 0.02 Feet: Precision = 1/80672: Perimeter = 1505 Feet		
001=n/e,se,sw,26,7n,1e	009=s00.0207w 654.64	017=n80.4614w 170.77
002=s00.0207w 513.64	010=n80.4614w 341.54	018=n80.4614w 170.77
003=s00.0207w 141	011=n80.4614w 170.77	019=m05.18w 602.6
004=n80.4614w 170.77	012=n00.0151e 572.70	020=s89.5824e 89.9
005=n12.05w 641.6	013=s89.5824e 112.5	021=s12.05e 641.6
006=s89.5824e 29.1	014=s05.18e 602.6	
007=s28.05e 582.4	015=@1	
008=@1	016=s00.0207w 654.64	

<u>Tract</u>	<u>DOT Date</u>	<u>DOT Filed</u>	<u>Record Owner</u>	<u>Borrower</u>	<u>Lender</u>	<u>Amount</u>
6A	07/03/2003	07/09/2003	Woodgreen Development Corp.	Woodgreen Development Corp.	BankFirst Financial Services	\$448,408.50
6B	07/03/2003	07/09/2006	Woodgreen Development Corp.	Woodgreen Development Corp.	BancorpSouth Bank	\$341,863.39
6C	07/07/2003	07/09/2003	Woodgreen Development Corp.	Woodgreen Development Corp.	BankPlus	\$369,602.42
6D	07/08/2003	07/09/2003	Woodgreen Development Corp.	Woodgreen Development Corp.	Union Planters Bank	\$481,020.50

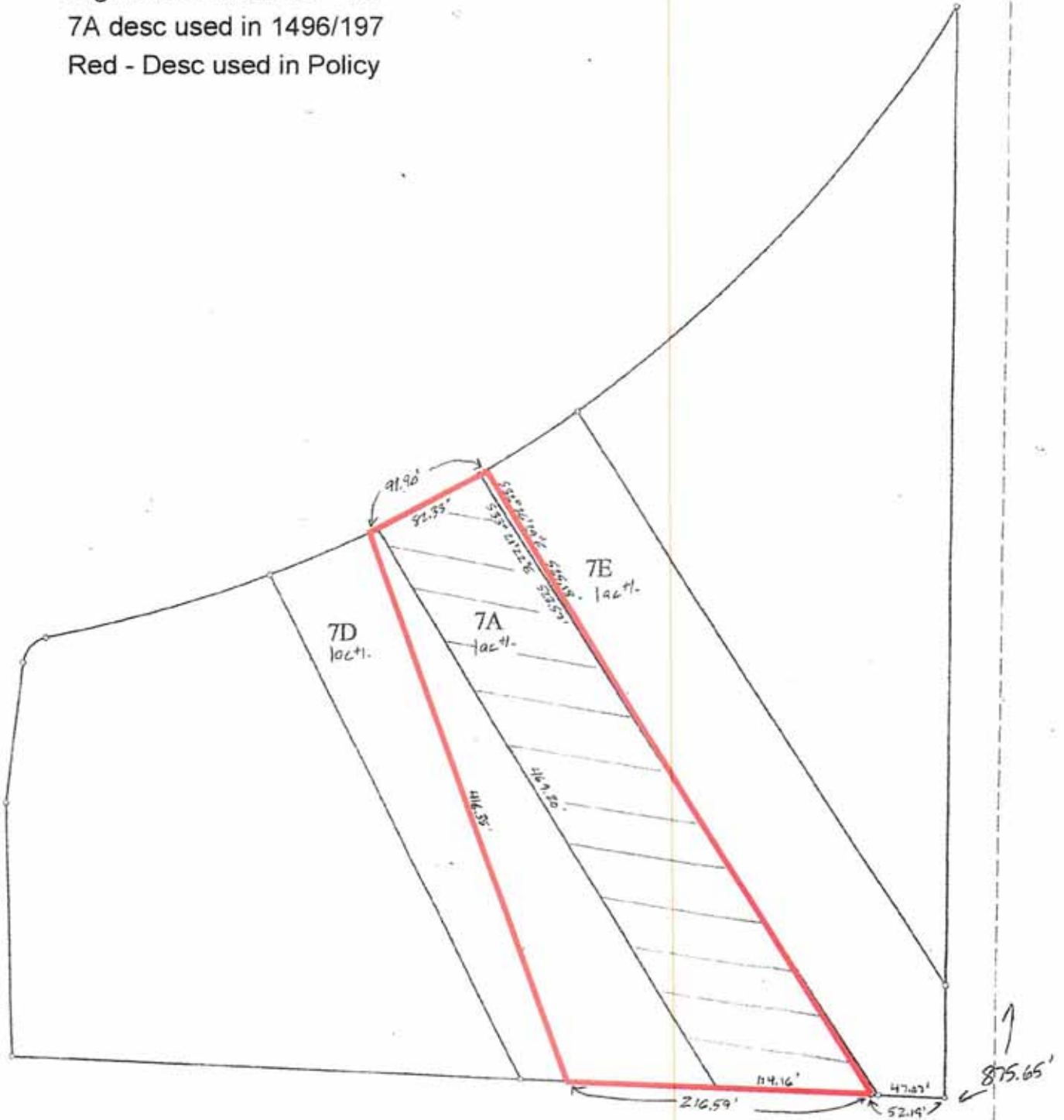
Village of Woodgreen

Title:		Scale: 1 inch = 125 feet	File: WOODGREEN DEVELOPMENT.des
Date: 09-12-2009			



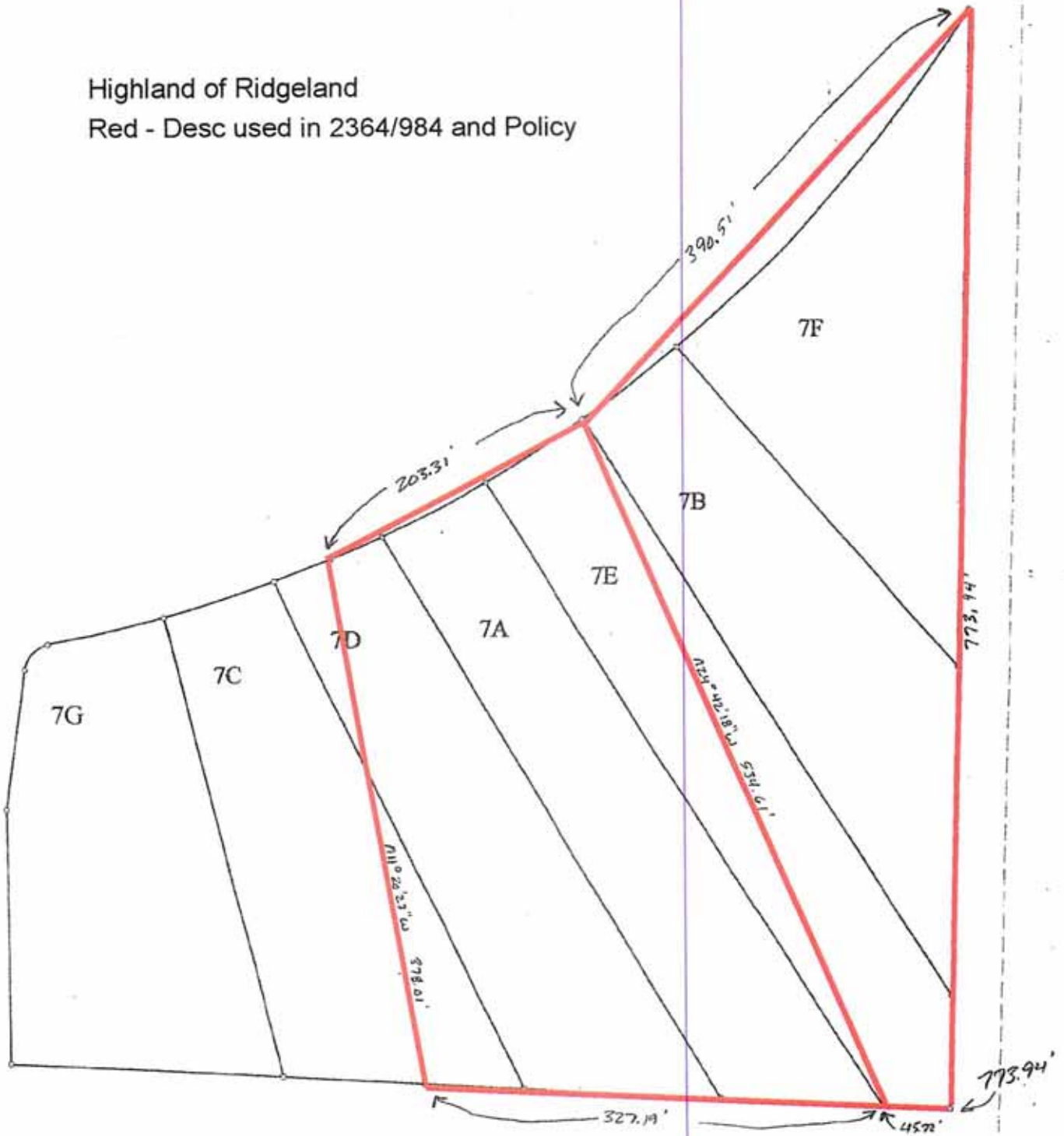
<u>Tract</u>	<u>DOT Date</u>	<u>DOT Filed</u>	<u>Record Owner</u>	<u>Borrower</u>	<u>Lender</u>	<u>Amount</u>
7A	01/15/2003	01/28/2003	Ridgeland Recreational Corp.	Ridgeland Recreational Corp.	Union Planters Bank	\$243,064.80
7B	01/14/2003	01/28/2003	Colony Construction, Ltd.	Colony Construction, Ltd.	BankPlus	\$183,695.77
7C	01/15/2003	01/28/2003	Colony Construction, Ltd.	Colony Construction, Ltd.	BancorpSouth Bank	\$250,000.00
7D	01/16/2003	01/28/2003	Highland of Ridgeland, Inc.	Highland of Ridgeland, Inc.	Consumer National Bank	\$248,467.00
7E	01/17/2003	01/28/2003	Colony Developers, Inc.	Colony Developers, Inc.	Madison County Bank	\$245,211.25
7F	01/13/2003	01/28/2003	Highland of Ridgeland, Inc.	Highland of Ridgeland, Inc.	SouthTrust Bank	\$228,461.43
7G	01/13/2003	01/28/2003	Colony Developers, Inc.	Jon Chris Evans	Merchants & Farmers Bank	\$287,200.00
7A, 7B, 7E, 7F & Parts 7C & 7D	07/21/2008	10/29/2008	Various	Park Place Commons, LLC	BancorpSouth Bank	\$1,500,051.00
7D, 7E, 7A, & 7C	02/01/2006	02/08/2006	Highland of Ridgeland, Inc.	Highland of Ridgeland, Inc.	Consumer National Bank	\$191,702.93
7G & Parts 7C & 7D	02/26/2008	07/08/2008	Colony Developers, Inc.	Colony Developers, Inc.	Merchants & Farmers Bank	\$169,680.30

Highland of Rideland - 7A  
 7A desc used in 1496/197  
 Red - Desc used in Policy



Title:	Date: 11-01-2009
Scale: 1 inch = 100 feet	File: Ridgeland Recreational (7A).des

Highland of Ridgeland  
Red - Desc used in 2364/984 and Policy

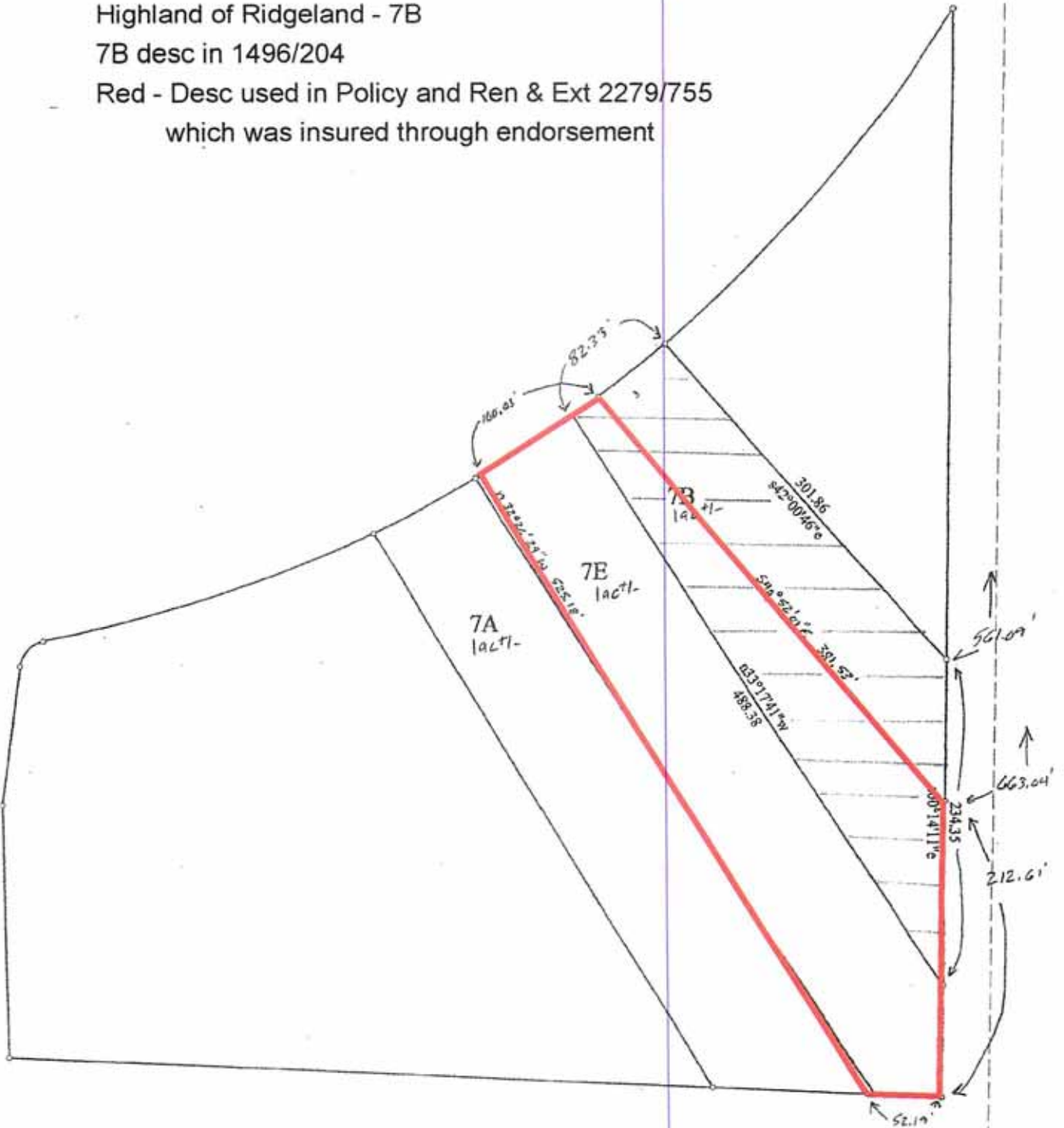


Title: -	Date: 11-01-2009
Scale: 1 inch = 100 feet	File: Park Place-BancorpSouth.des

Highland of Ridgeland - 7B

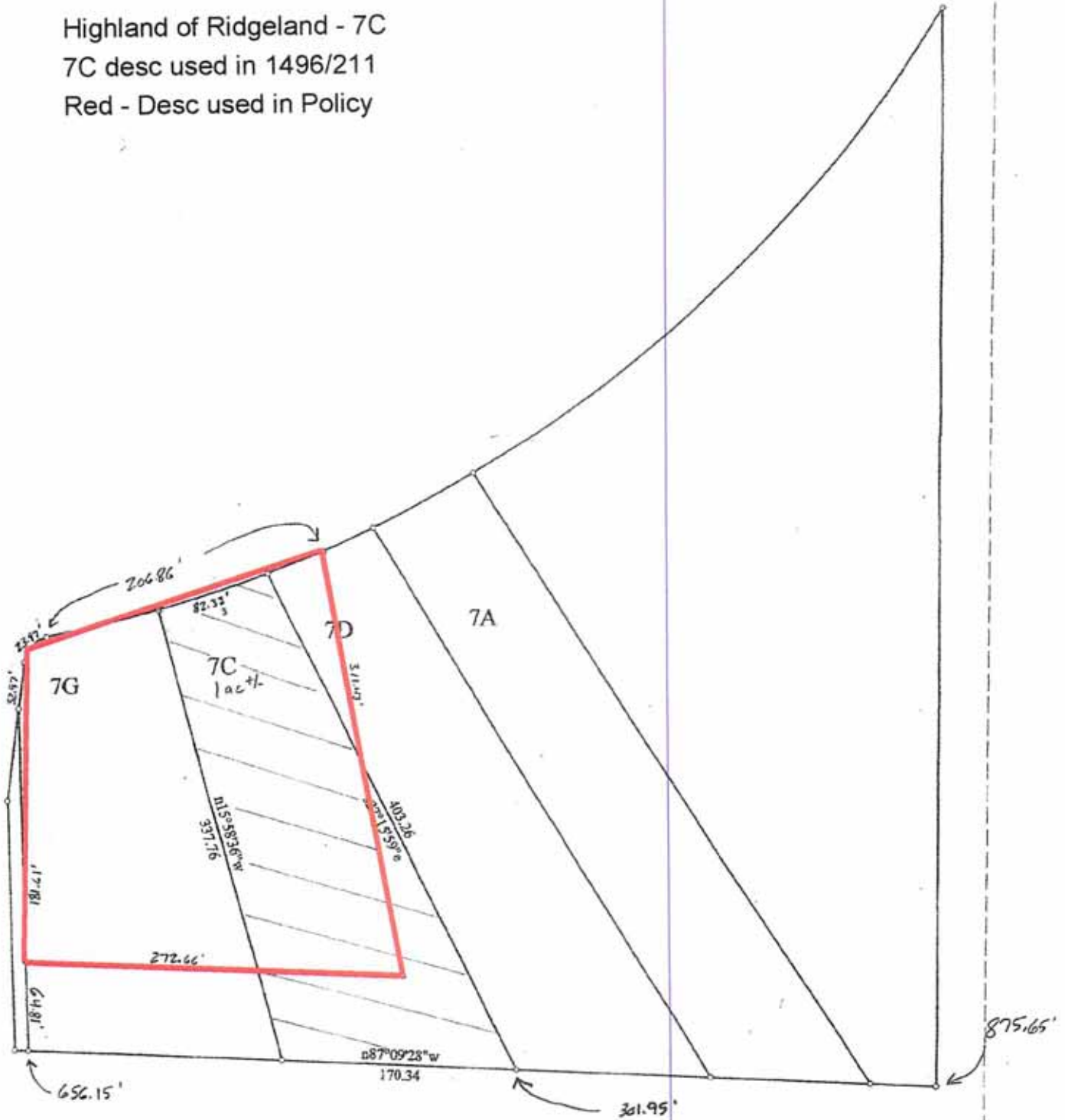
7B desc in 1496/204

Red - Desc used in Policy and Ren & Ext 2279/755  
 which was insured through endorsement



Title:	Date: 11-01-2009
Scale: 1 inch = 100 feet	File: Colony Construction (7B).des

Highland of Ridgeland - 7C  
 7C desc used in 1496/211  
 Red - Desc used in Policy



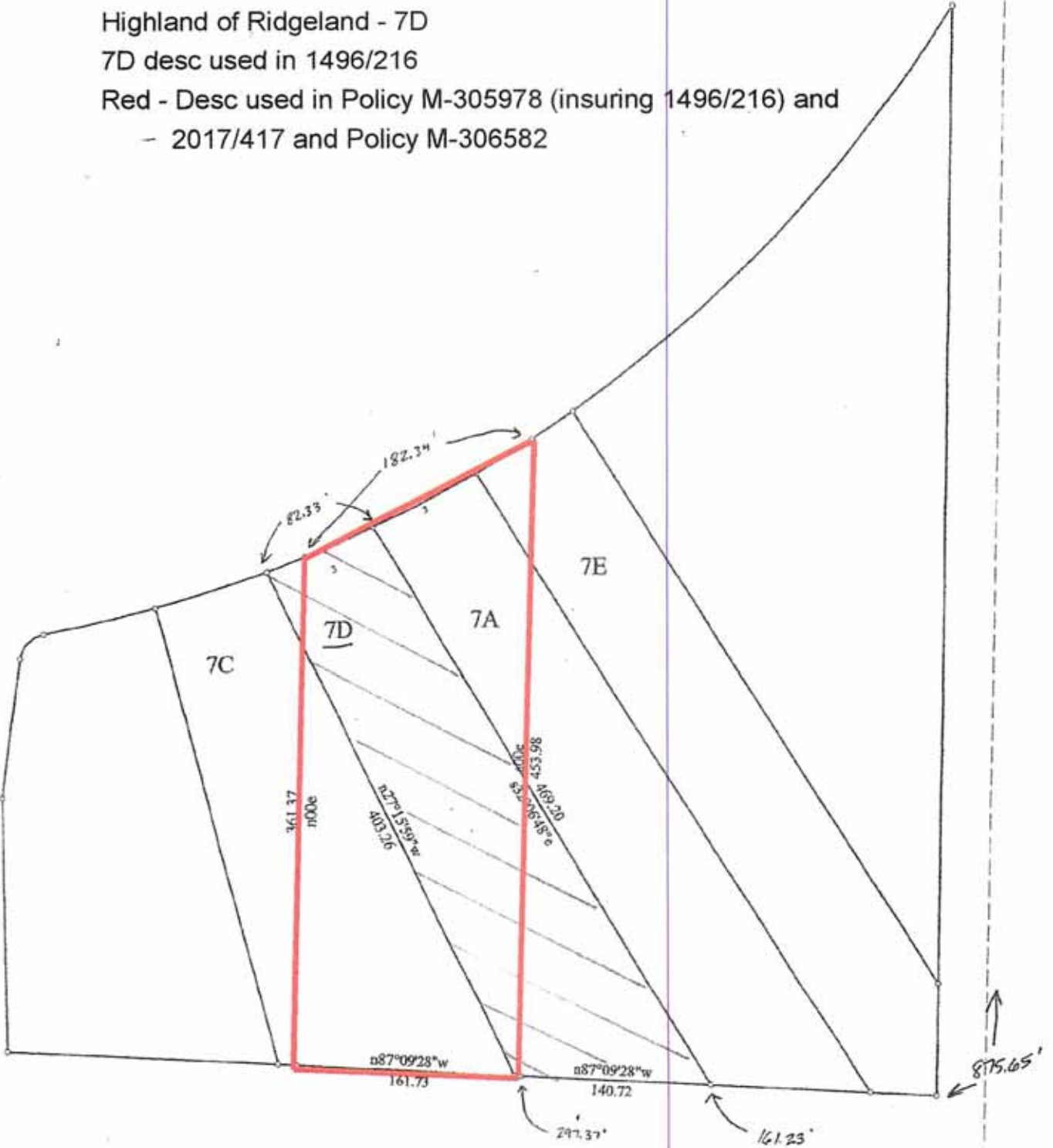
Title:		Date: 11-01-2009
Scale: 1 inch = 100 feet	File: Colony Construction (7C).des	

Highland of Ridgeland - 7D

7D desc used in 1496/216

Red - Desc used in Policy M-305978 (insuring 1496/216) and

- 2017/417 and Policy M-306582



Title:

Date: 11-01-2009

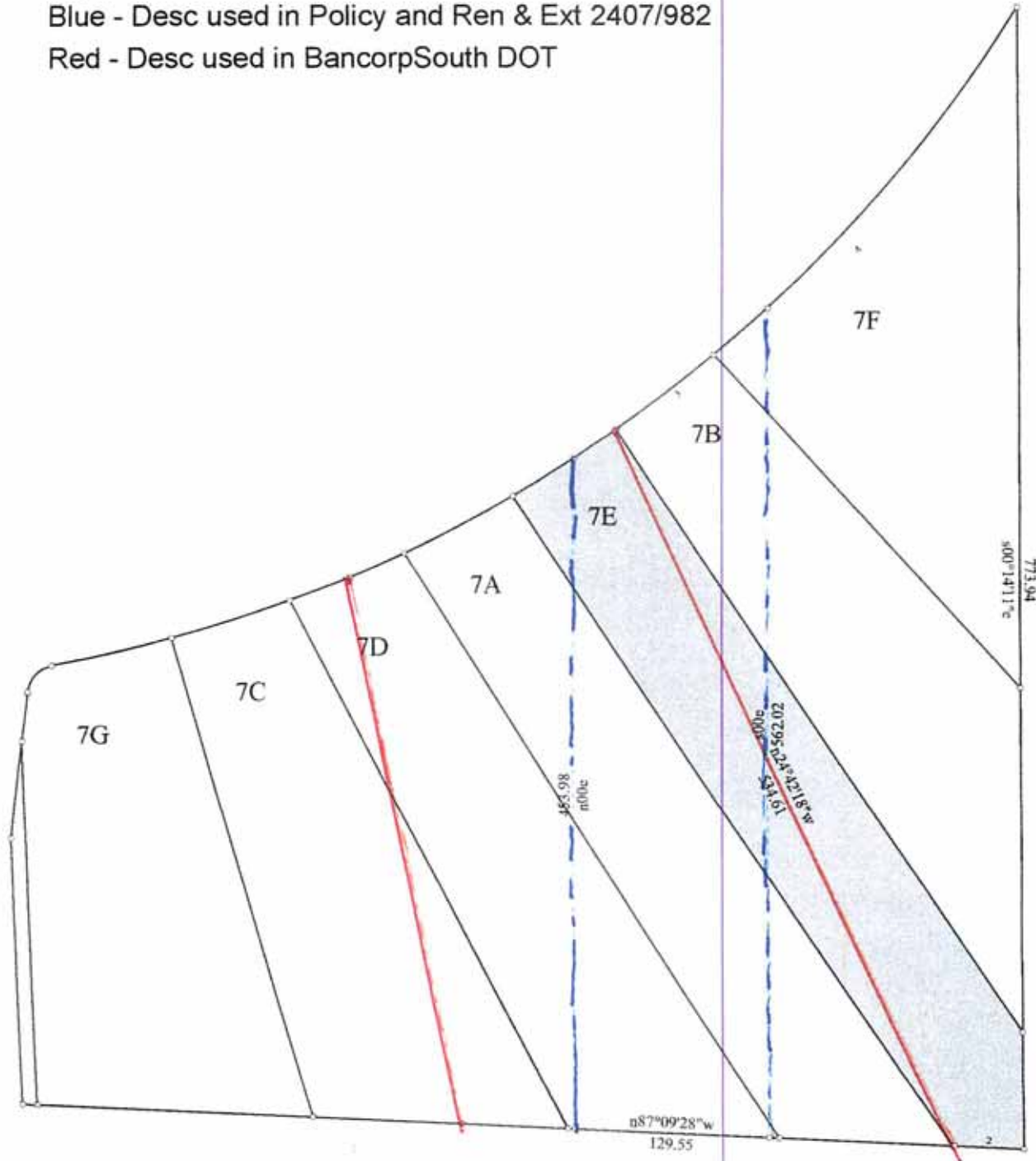
Scale: 1 inch = 100 feet

File: Highland of Ridgeland (7D).des

Highland of Ridgeland - 7E

Blue - Desc used in Policy and Ren & Ext 2407/982

Red - Desc used in BancorpSouth DOT

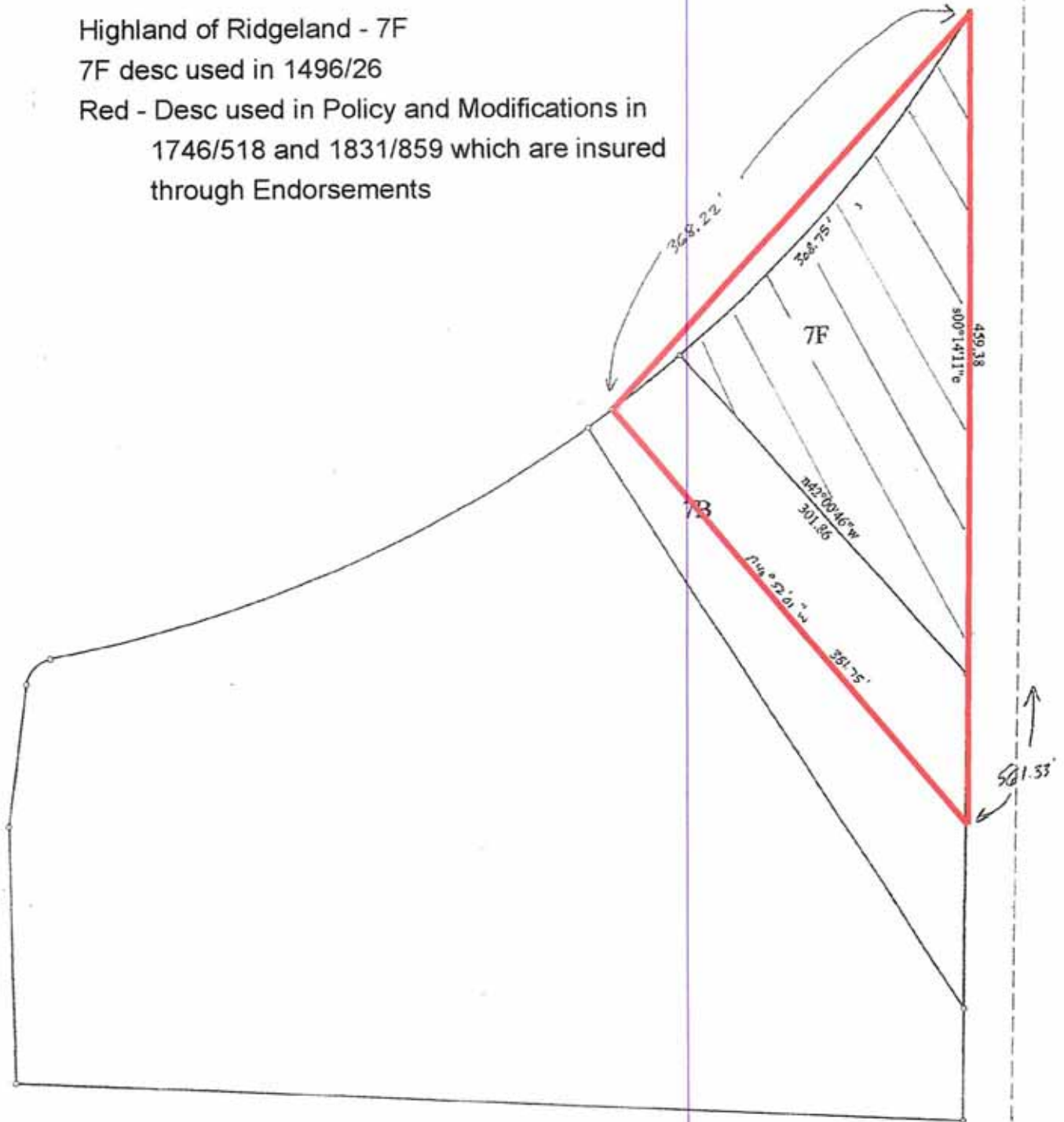


Title:	Date: 09-20-2009
Scale: 1 inch = 100 feet	File: Highland of Ridgeland (7E).des

Highland of Ridgeland - 7F

7F desc used in 1496/26

Red - Desc used in Policy and Modifications in  
1746/518 and 1831/859 which are insured  
through Endorsements



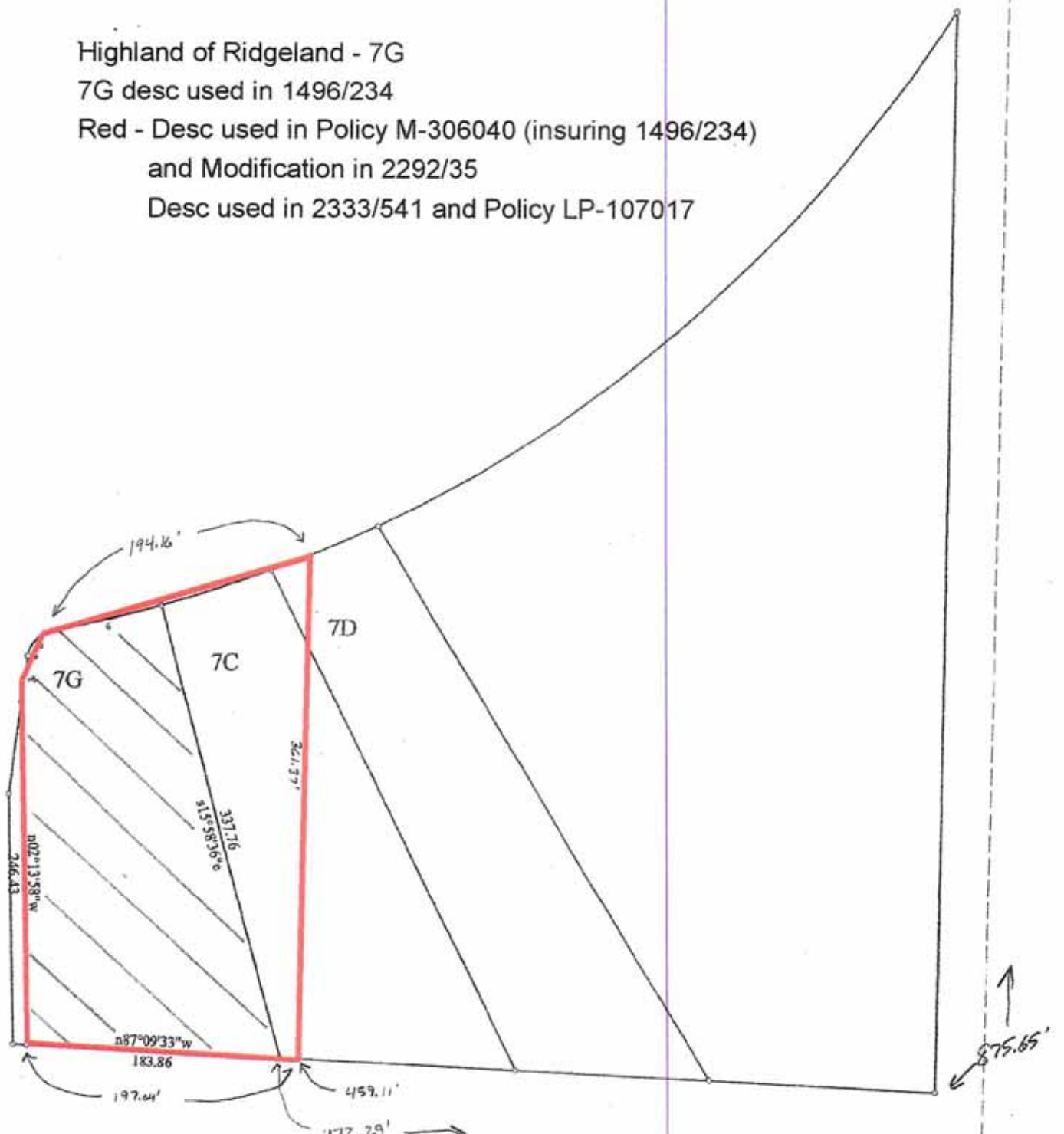
Title:	Date: 11-01-2009
Scale: 1 inch = 100 feet	File: Highland of Ridgeland (7F).des

Highland of Ridgeland - 7G

7G desc used in 1496/234

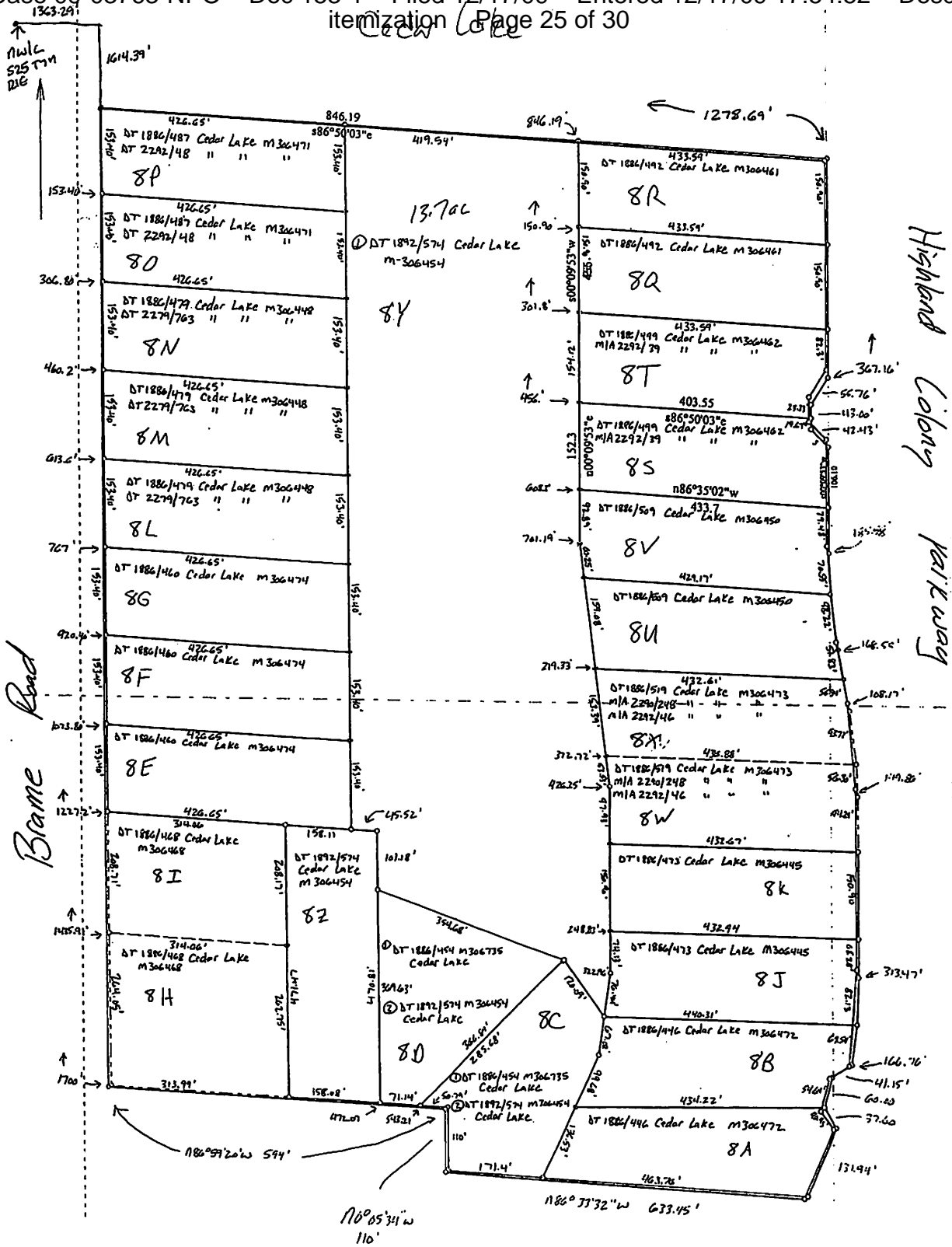
Red - Desc used in Policy M-306040 (insuring 1496/234)  
 and Modification in 2292/35

Desc used in 2333/541 and Policy LP-107017



Title:	Date: 11-01-2009
Scale: 1 inch = 100 feet	File: Colony Developers (7G).des

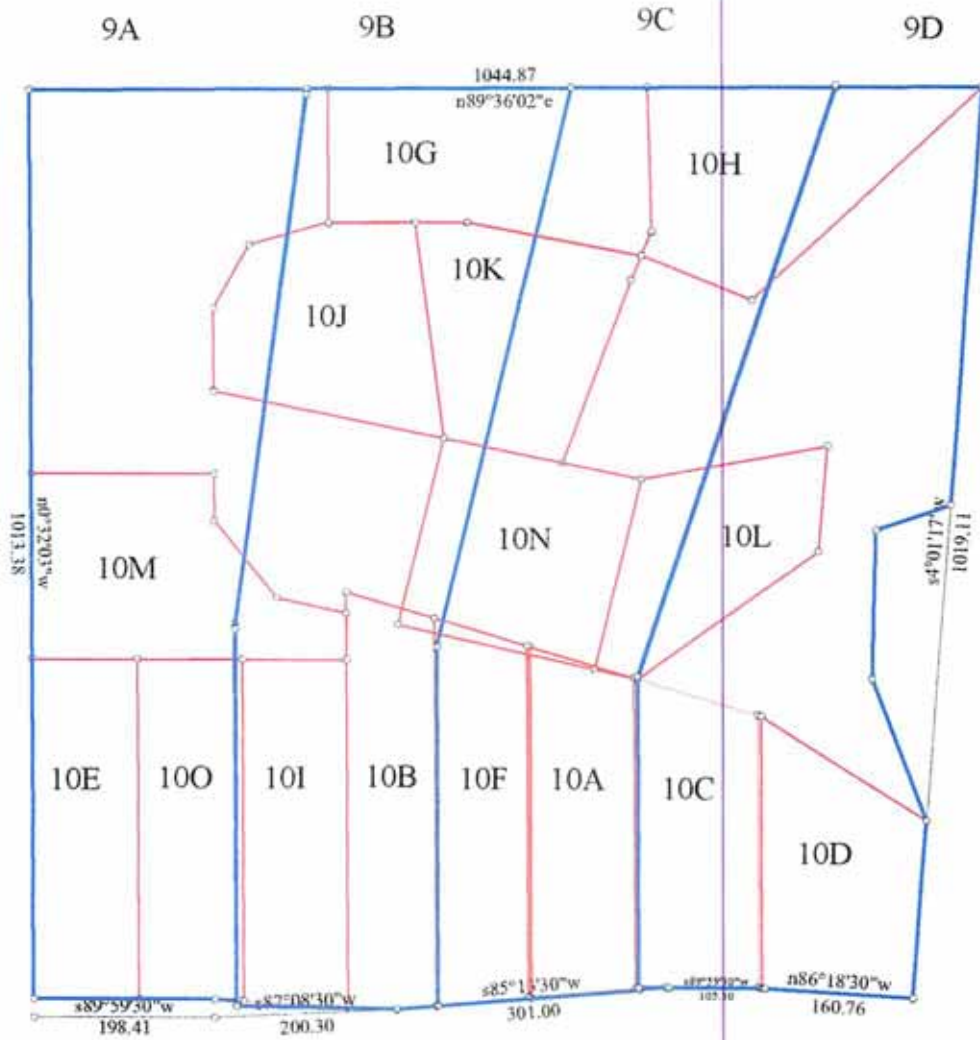
<u>Tract</u>	<u>DOT Date</u>	<u>DOT Filed</u>	<u>Record Owner</u>	<u>Borrower</u>	<u>Lender</u>	<u>Amount</u>
8A & 8B	01/07/2005	02/24/2006	Cedar Lake Investors, LLC	Cedar Lake Investors, LLC	National Bank of Commerce	\$760,241.99
8C & 8D	01/06/2005	02/24/2005	Cedar Lake Investors, LLC	Cedar Lake Investors, LLC	OmniBank	\$500,529.50
8C, 8D, 8Y, & 8Z	03/09/2005	03/10/2005	Cedar Lake Investors, LLC	Cedar Lake Investors, LLC	Regions Bank	\$1,480,000.00
8E, 8F & 8G	01/07/2005	02/24/2005	Cedar Lake Investors, LLC	Cedar Lake Investors, LLC	Citizens National Bank of Meridian	\$712,179.50
8H & 8I	01/06/2005	02/24/2005	Cedar Lake Investors, LLC	Cedar Lake Investors, LLC	First Bank	\$416,167.50
8J & 8K	01/07/2005	02/24/2005	Cedar Lake Investors, LLC	Cedar Lake Investors, LLC	BancorpSouth Bank	\$780,000.00
8L, 8M & 8N	01/07/2005	02/24/2005	Cedar Lake Investors, LLC	Cedar Lake Investors, LLC	BankPlus	\$631,377.50
8O & 8P	01/07/2005	02/24/2005	Cedar Lake Investors, LLC	Cedar Lake Investors, LLC	Madison County Bank	\$435,280.29
8Q & 8R	01/07/2005	02/24/2005	Cedar Lake Investors, LLC	Cedar Lake Investors, LLC	BankFirst Financial Services	\$760,000.00
8S & 8T	01/05/2005	02/24/2005	Cedar Lake Investors, LLC	Cedar Lake Investors, LLC	Merchants & Farmers Bank	\$613,964.15
8U & 8V	01/07/2005	02/24/2005	Cedar Lake Investors, LLC	Cedar Lake Investors, LLC	Community Bank of MS	\$720,000.00
8W & 8X	01/07/2005	02/24/2005	Cedar Lake Investors, LLC	Cedar Lake Investors, LLC	Britton & Koontz Bank	\$485,057.21



WD 1-7-05 Marble, LLC to Cedar Lake Investors, LLC 52.005 ac +/-  
 1873/983 1-19-05

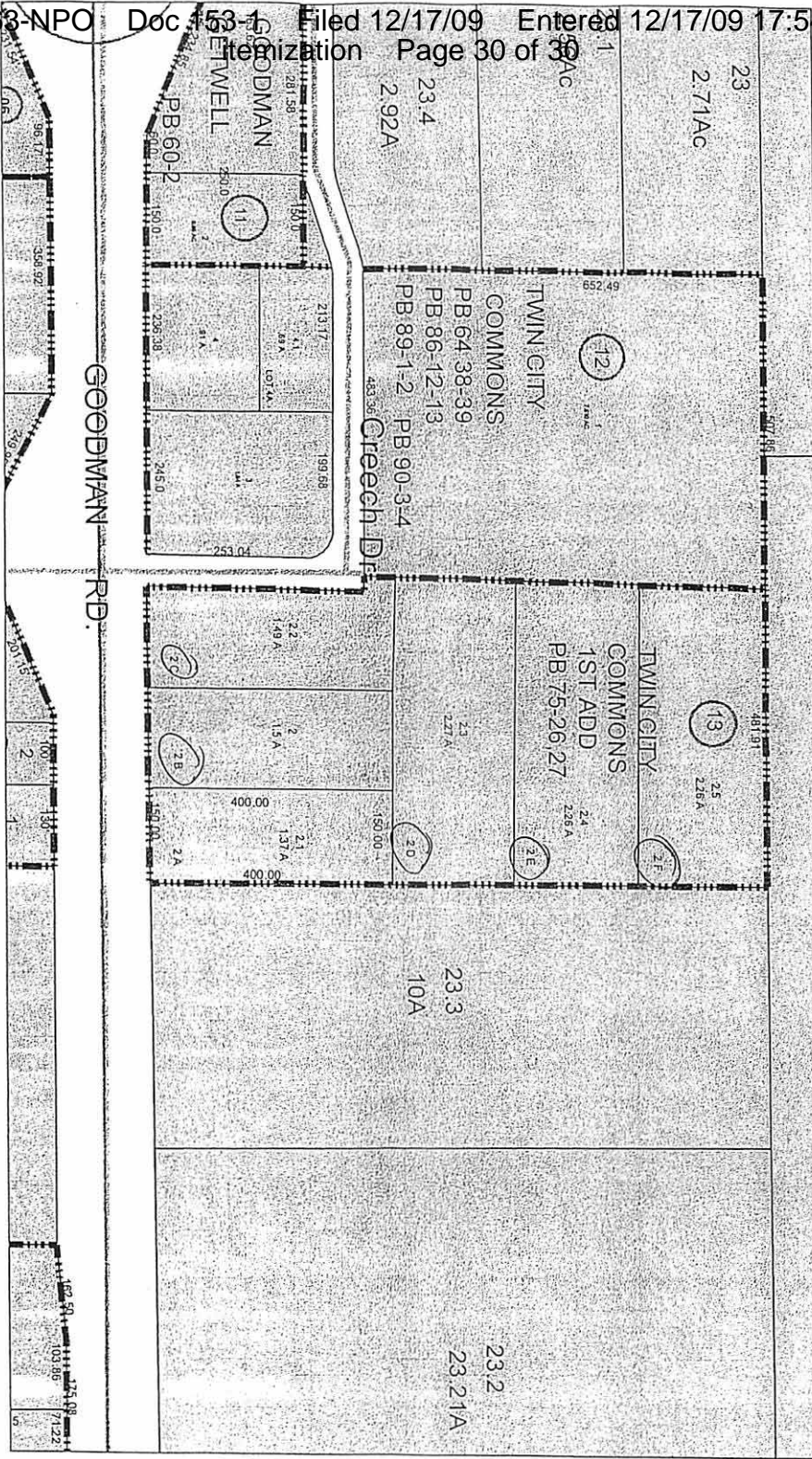
<u>Tract</u>	<u>DOT Date</u>	<u>DOT Filed</u>	<u>Record Owner</u>	<u>Borrower</u>	<u>Lender</u>	<u>Amount</u>
9A	08/14/2007	10/29/2007	Woodgreen Development Corp.	Snowden Lane Investments, LLC	Merchants & Farmers Bank	\$616,874.81
9A	08/04/2004	08/11/2004	Woodgreen Development Corp.	Snowden Lane Investments, LLC	Merchants & Farmers Bank	\$800,233.50
9B	09/22/2008	12/01/2008	Woodgreen Development Corp.	Snowden Lane Investments, LLC	BancorpSouth Bank	\$555,585.53
9B	08/05/2004	08/11/2004	Woodgreen Development Corp.	Snowden Lane Investments, LLC	BancorpSouth Bank	\$800,000.00
9C	08/04/2004	08/11/2004	Woodgreen Development Corp.	Snowden Lane Investments, LLC	Community Bank of MS	\$800,000.00
9D	08/04/2004	08/11/2004	Woodgreen Development Corp.	Snowden Lane Investments, LLC	Bankfirst Financial Services	\$800,418.00
10A	08/25/2006	10/30/2006	Woodgreen Development Corp.	Colony Construction, Ltd.	BankPlus	\$338,122.15
10A	08/20/2004	10/21/2004	Woodgreen Development Corp.	Colony Construction, Ltd.	BankPlus	\$400,518.50
10B	08/31/2004	12/02/2004	Woodgreen Development Corp.	Highland of Ridgeland, Inc.	Wachovia Bank (SouthTrust Bank)	\$400,000.00
10C	09/16/2004	10/21/2004	Woodgreen Development Corp.	Twin City Commons Development Co, LLC	Peoples Bank & Trust Co.	\$400,000.00
10D	11/05/2004	12/02/2004	Woodgreen Development Corp.	Snowden Grove Investors, LLC	First Trust Bank for Savings	\$380,000.00
10E	11/22/2004	12/02/2004	Woodgreen Development Corp.	Snowden Grove Investors, LLC	First Alliance Bank	\$380,000.00

Case No.	Date	Entity	Bank	Amount
10F	11/22/2004	Woodgreen Development Corp.	Snowden Grove Investors, LLC	\$380,000.00
10G & 10H	06/17/2005	Woodgreen Development Corp.	Cedar Lake Investors, LLC	\$328,381.70
10I	06/27/2005	Woodgreen Development Corp.	Woodgreen Development Corp.	\$312,761.17
10J & 10K	07/22/2005	Woodgreen Development Corp.	Cedar Lake Investors, LLC	\$500,000.00
10L	08/10/2005	Woodgreen Development Corp.	Woodgreen Development Corp.	\$195,038.93
10M & 10N	08/10/2005	Woodgreen Development Corp.	Cedar Lake Investors, LLC	\$424,000.00
10O	08/30/2004	Woodgreen Development Corp.	Old Agency Business Park, Inc.	\$400,000.00
100 & 10E	04/28/2008	Woodgreen Development Corp.	Brashear Heath, LLC	\$900,165.00
10P		Woodgreen Development Corp.		
10Q		Woodgreen Development Corp.		



Title:	Date: 11-18-2008
Scale: 1 inch = 200 feet	File: Woodgreen Development - Nov 24.des

<u>Tract</u>	<u>DOT Date</u>	<u>DOT Filed</u>	<u>Record Owner</u>	<u>Borrower</u>	<u>Lender</u>	<u>Amount</u>
TC-2B	06/10/2004	06/17/2004	Twin City Commons Development, LLC	Twin City Commons Development Co, LLC	First Tennessee Bank	\$600,000.00
TC-2B	01/16/2009	01/20/2009	Twin City Commons Development, LLC	Twin City Commons Development Co, LLC	First Security Bank	\$801,128.00
TC-2B	06/25/2008	07/24/2008	Twin City Commons Development, LLC	Twin City Commons Development Co, LLC	Bank of Bartlett	\$585,000.00
TC-2C	01/27/2009	02/11/2009	Twin City Commons Development, LLC	Twin City Commons Development Co, LLC	Commercial Bank & Trust Co.	\$572,000.00
TC-2C	07/14/2004	07/14/2004	Twin City Commons Development, LLC	Twin City Commons Development Co, LLC	Bank of Bartlett	\$580,000.00
TC-2D	06/11/2004	06/17/2004	Twin City Commons Development, LLC	Twin City Commons Development Co, LLC	Bank of America	\$664,000.00
TC-2E	06/11/2004	06/17/2004	Twin City Commons Development, LLC	Twin City Commons Development Co, LLC	Trust One Bank	\$584,000.00
TC-2F	06/30/2004	07/08/2004	Twin City Commons Development, LLC	Twin City Commons Development Co, LLC	The Peoples Bank & Trust Co.	\$392,000.00



*Twin City Commons*